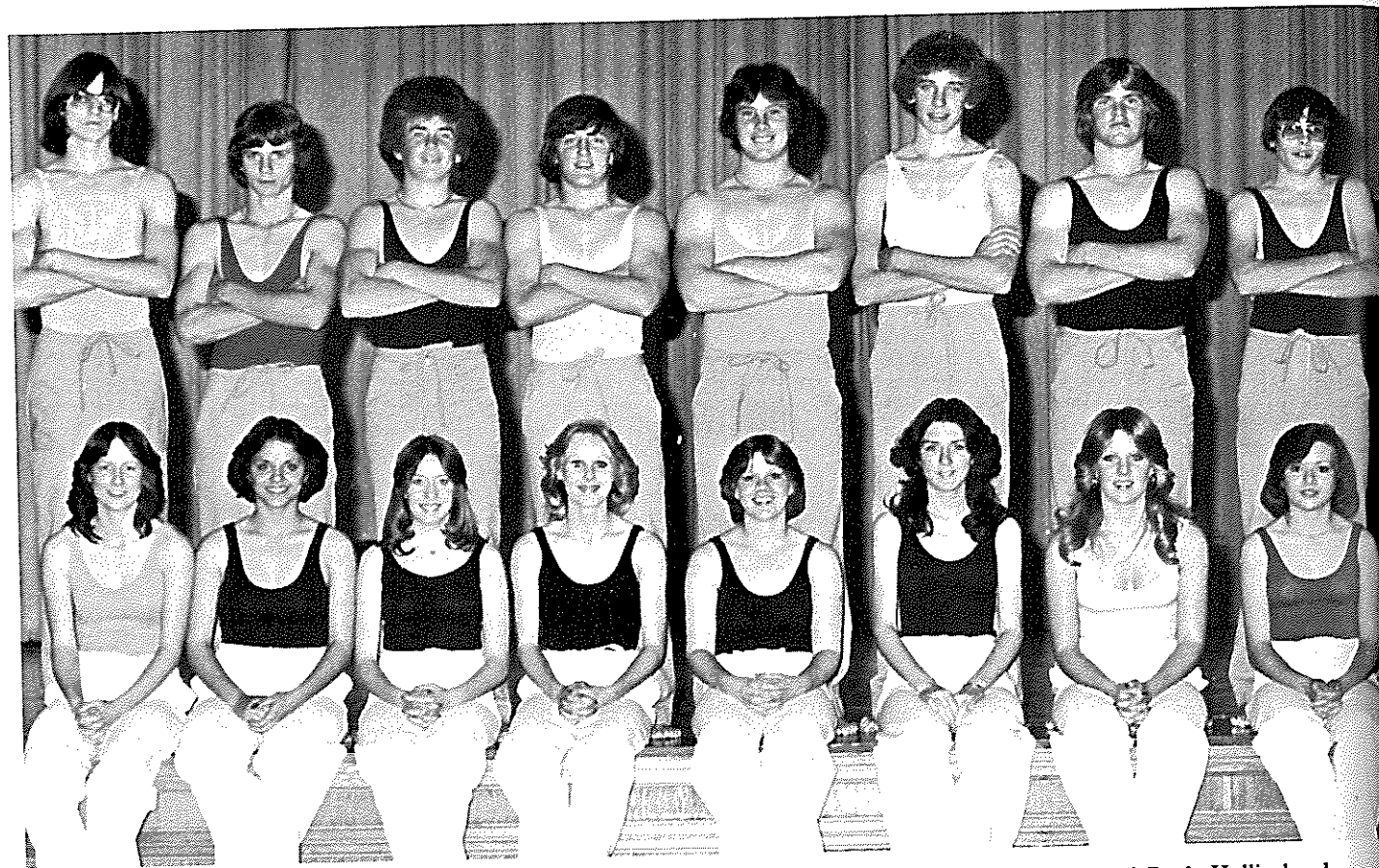


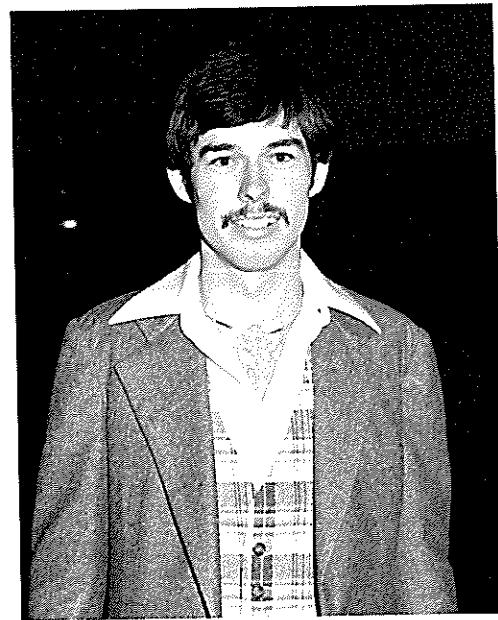
# Juniors Present 'Sounds Of Lonely'



Juniors in the cast of the 1977-78 Junior Class play, "The Sounds of Lonely" include FRONT ROW (l-r) Paula Hollinshead, Kim Ray, Vicki Burkhalter, Leslie Biddle, Becky Brownlee, Stephanie Morgan, Beverly Gillock, and Kay Hill. BACK ROW (l-r) Jimmy Jones, Tim Smith, Doug Fields, Dub Dietrich, Ed McCasland, Kevin Castleman, Greg Hawley and Steve Brooks.

## Program

Members of the "Company" were Leslie Biddle, Becky Brownlee, Vicki Burkhalter, Beverly Gillock, Kay Hill, Paula Hollinshead, Stephanie Morgan, Kim Ray, Steve Brooks, Kevin Castleman, Dub Dietrich, Doug Fields, Greg Hawley, Jimmy Jones, Edwin McCasland and Tim Smith. The play focused on various aspects of loneliness — young and old — in the city and in the country.



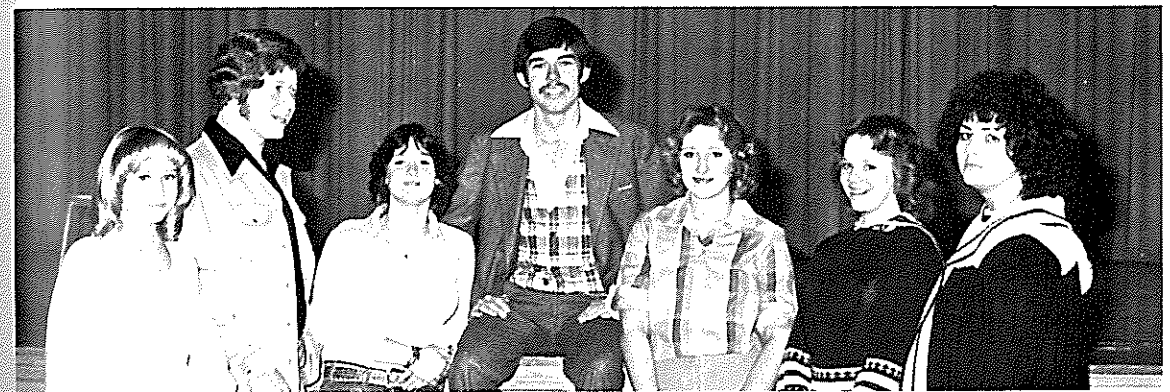
Drama Coach Mike McNabb

### STAFF

Director	Mike McNabb
Stage Manager	Alice Pendergrass
Electrician	Craig Shores
Follow Spot	Nancy Christian
Sound	Nita Gough
Projectionists	Sharita Carter & Becky Davis
House Manager	Melanie Helmer
Photographers	Becky Davis & Craig Shores
Ushers	Junior Class



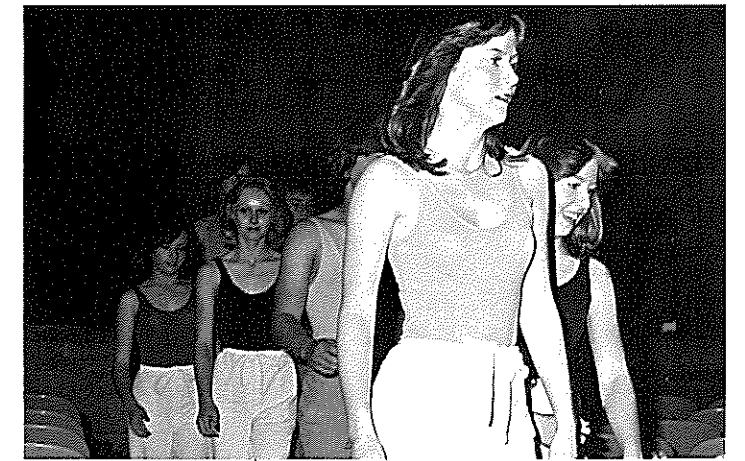
Presenting the poem "Mildred Klinghopper" were (l-r) Kevin Castleman, Leslie Biddle, Stephanie Morgan, Beverly Gillock and Tim Smith. The poem focused on people who lived on dreams in dreamworlds.



Members of the staff and crew are shown discussing the production. Shown (l-r) are Melanie Helmer, Craig Shores, Nancy Christian, Mike McNabb, Becky Davis, Sharita Carter and Danita Gough.



The final scene of the show featured Steve Brooks and Kay Hill in "Reach Out And Touch Somebody's Hand."



The show opened and closed with members of the cast entering and exiting down the aisles.